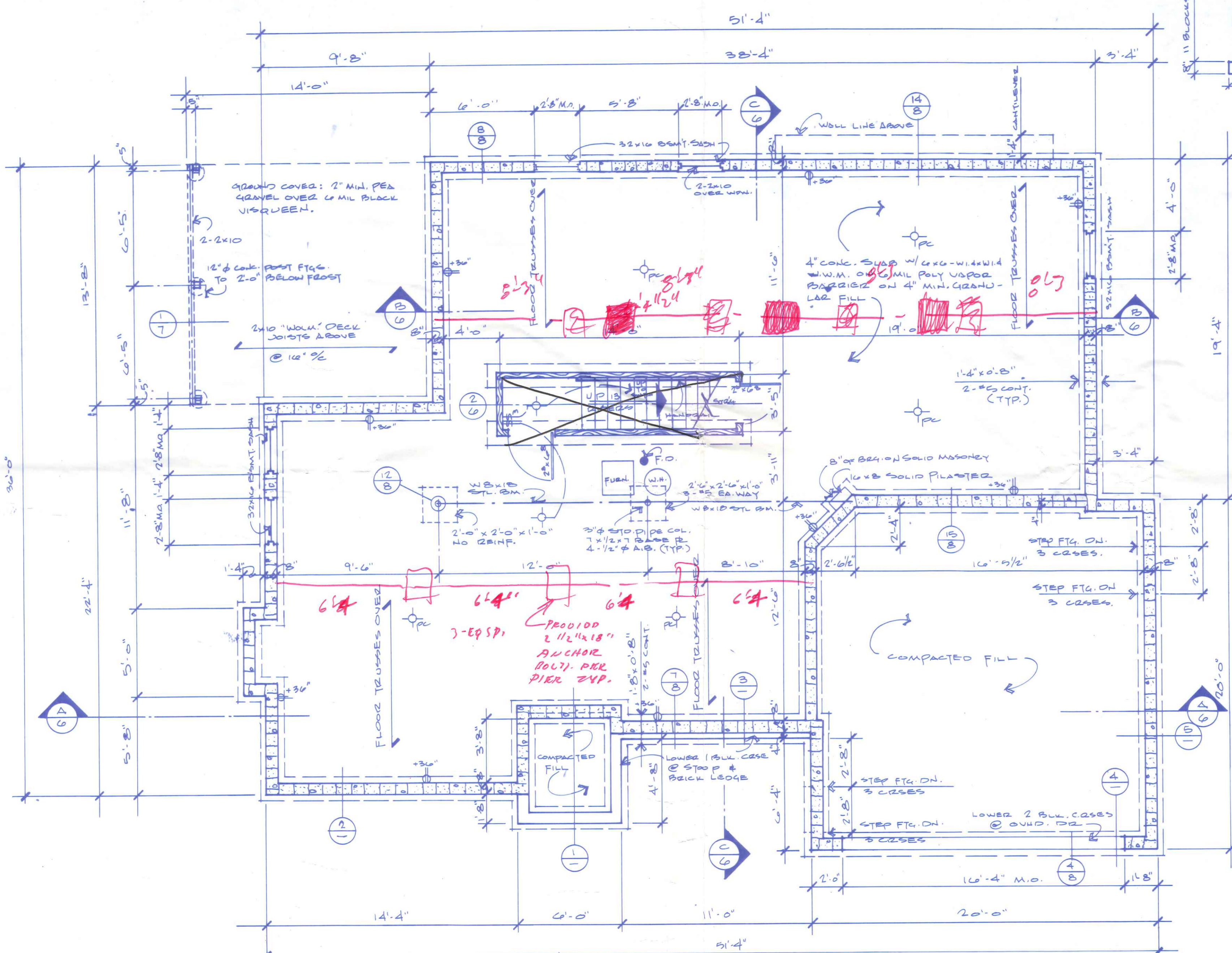


**JDB PLAN SERVICE**  
 THESE DRAWINGS ARE PREPARED TO MEET THE REQUIREMENTS OF THE IOWA DEPARTMENT OF PUBLIC SAFETY. THEY MAY BE ALSO USED AS DOCUMENTS FOR CONSTRUCTION. ALL NOTES AND DIMENSIONS ARE SUBJECT TO CHANGE ACCORDING TO LOCAL CODES, BUILDING DEPARTMENT, AND SITE CONDITIONS. NO LIABILITY IS ASSUMED FOR THIS DRAWING IN WHOLE OR PART IF REPRODUCED.

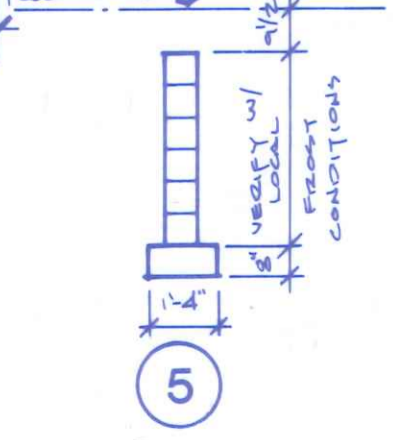
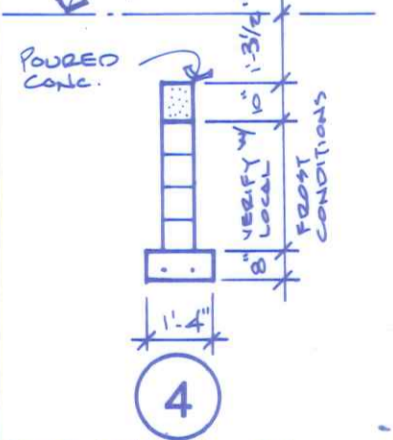
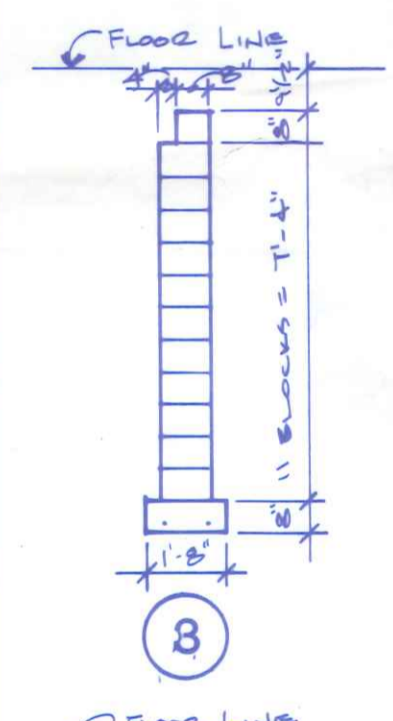
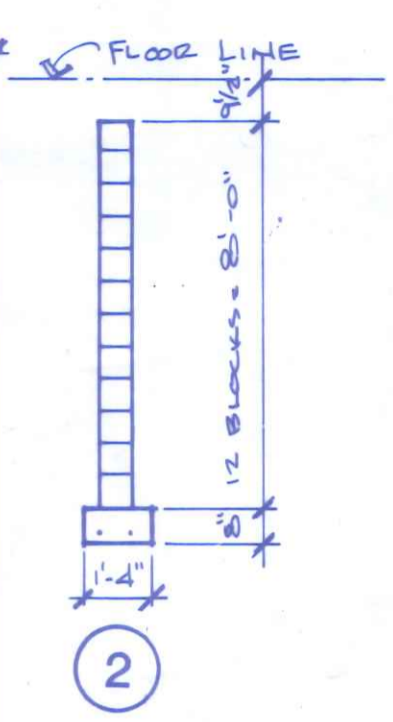
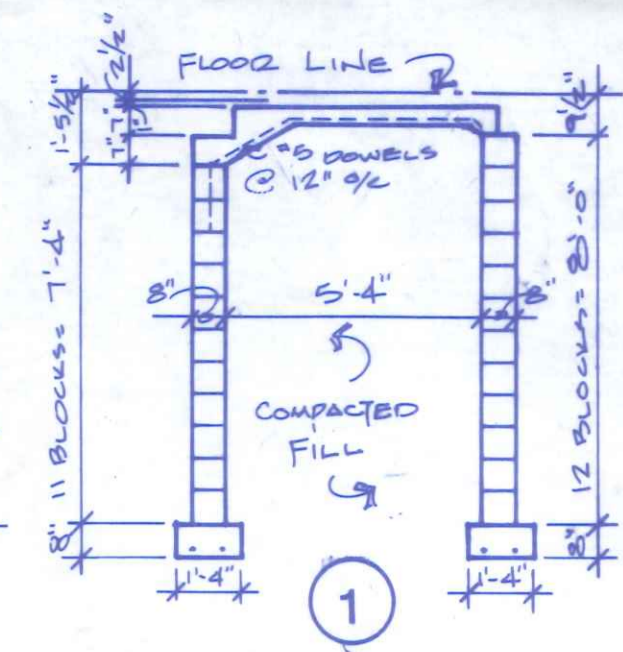


**FOUNDATION AND BASEMENT PLAN**  
 SCALE - 1/4" = 1'-0"  
 40" CRAWL

NOTE: TRUSS MANUFACTURER TO SIZE MEMBERS EXTENDED AND SET SPACING OF ALL ROOF + FLOOR TRUSSES FOR INDICATED DESIGN LOADS (MAX. SPACING 24" O.C.)

Floor joists - 2'x10' Douglas fir 16" O.C. center supported 2'x10" glue + nailed on concrete block supports every 8'

**NOTES:**  
 - Fill top course of all walls continuous with stiff grout.  
 - Set anchor bolts in cores not head joints.  
 - For walls with earth one side reinf. w/ #7 rebars @ 48" o.c. + fill cells w/ 2000 p.s.i. grout.  
 - Verify local frost depth requirements.



**FOUNDATION SECTIONS**  
 SCALE - 1/4" = 1'-0"

935 N. Harmony

**HOUSE DESIGN**  
 908

**JDB**

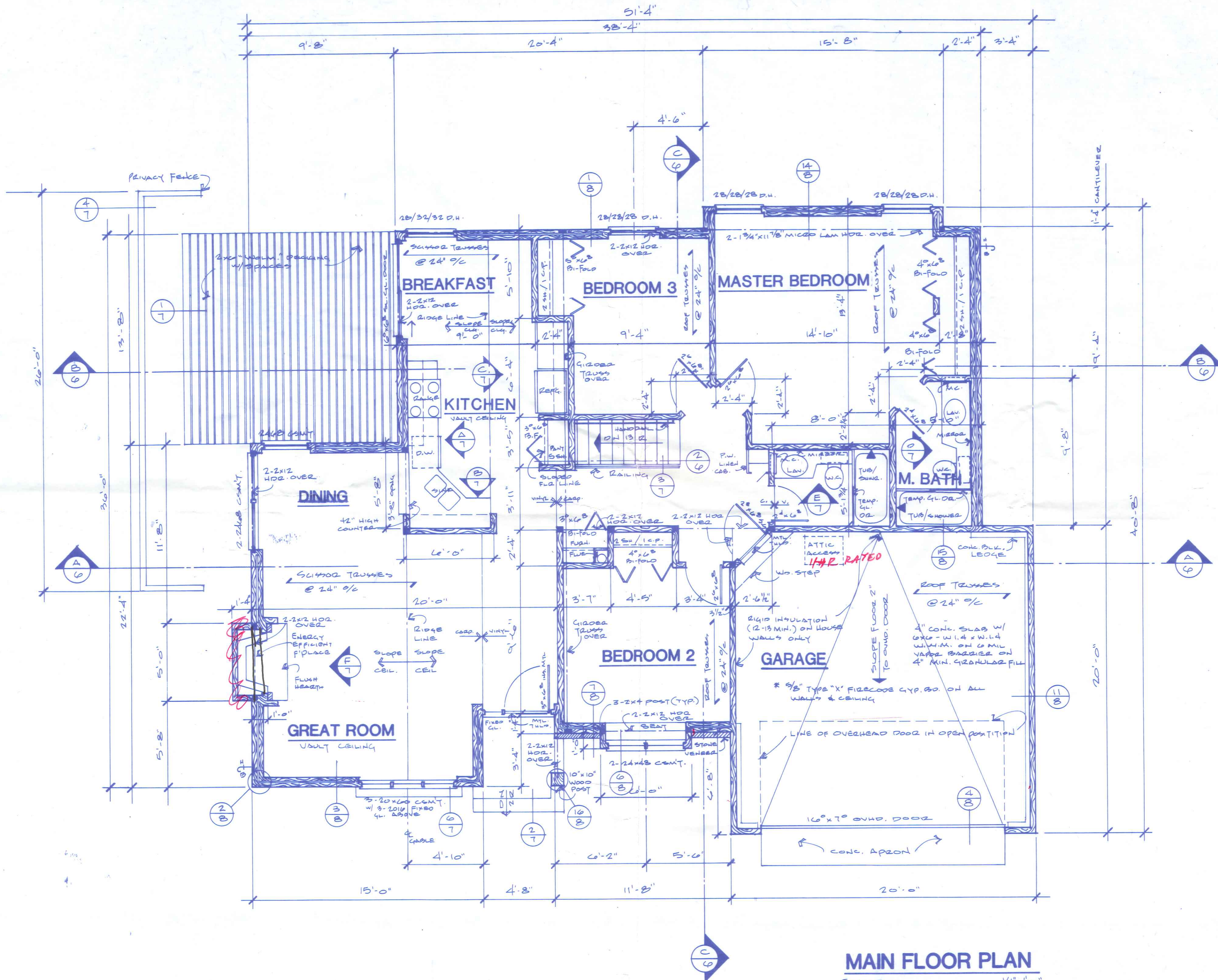
JDB PLAN SERVICE

3001 GRAND AVENUE  
 DES MOINES, IOWA 50312  
 (515) 283-0404

SHEET 3 OF 8  
 FOUNDATION PLAN AND SECTIONS

BRUNING 44-142 59237-1

**JDB PLAN SERVICE**  
 THESE DRAWING CHANGES ARE PROVIDED TO MAKE THE PROJECT MORE ACCURATE AND AVAILABLE TO THE PURCHASER. THEY MAY BE ALSO USED AS DOCUMENTS FOR CONSTRUCTION. ALL NOTES AND DIMENSIONS ARE SUBJECT TO CHANGE ACCORDING TO LOCAL CODES, BUILDING DEPARTMENT REGULATIONS, AND THE MANUFACTURER'S INSTRUCTIONS. THIS SERVICE IS WHOLE OR PART IS PROHIBITED.



**MAIN FLOOR PLAN**  
 SCALE - 1/4" = 1'-0"

- INDICATES SOLID BEARING IN FRAME CONSTRUCTION. UNLESS NOTED OTHERWISE, 3-2x4 POST (TYPICAL).
- 2-2x12 HOOR. OVER ALL EXTERIOR OPNGS UNLESS NOTED OTHERWISE.
- TRUSS MANUFACTURER TO SIZE MEMBERS, FASTENERS, AND SET SPACING OF ALL ROOF & FLOOR TRUSSES FOR INDICATED DESIGN LOADS. (MAX. SPACING, 24" O.C.)

**HOUSE DESIGN**  
 908

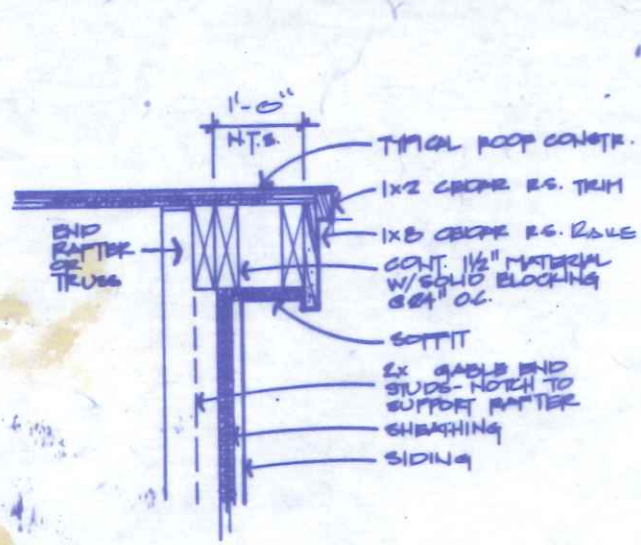


**JDB PLAN SERVICE**  
 3001 GRAND AVENUE  
 DES MOINES, IOWA 50312  
 (515) 283-0404

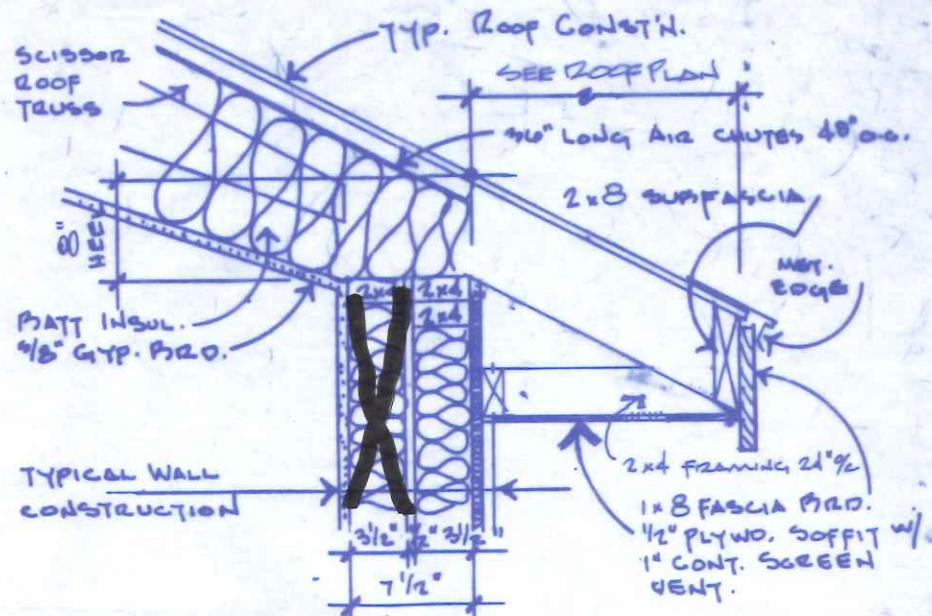
**SHEET 4 OF 8**  
 Main Floor Plan

BRUNING 44-142 59237-1

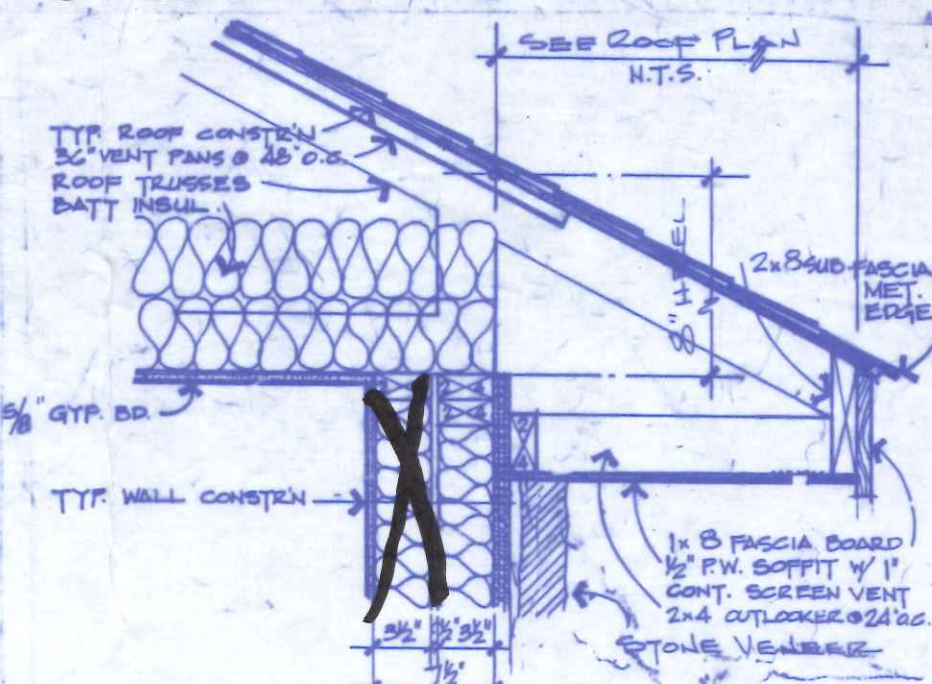
# NOTE - SINGLE WALL CONSTRUCTION 2x4 @ 16" O.C.



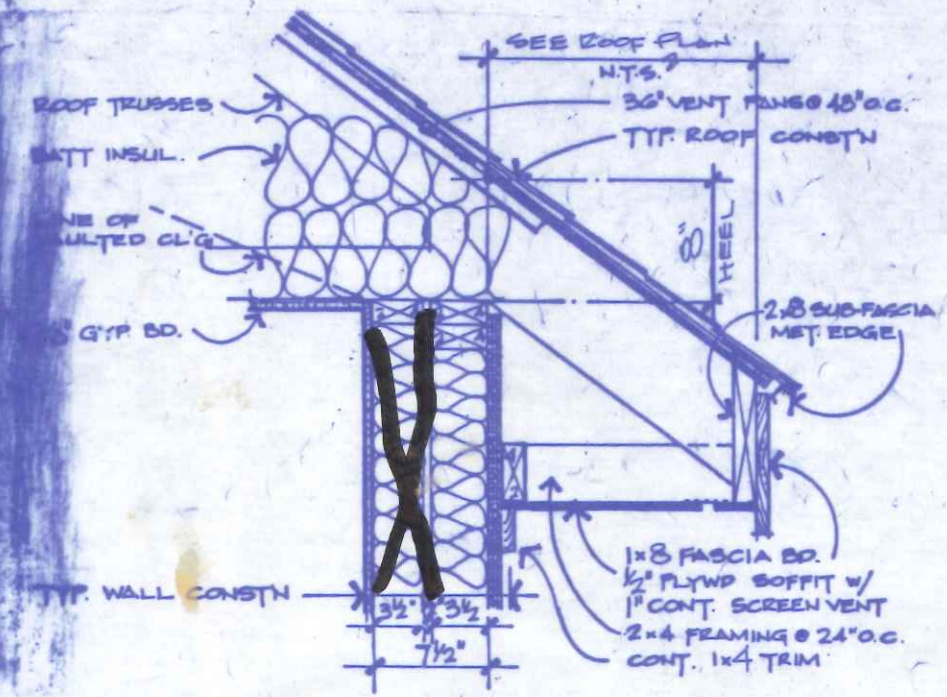
**13** RAKE DETAIL  
N.T.S.



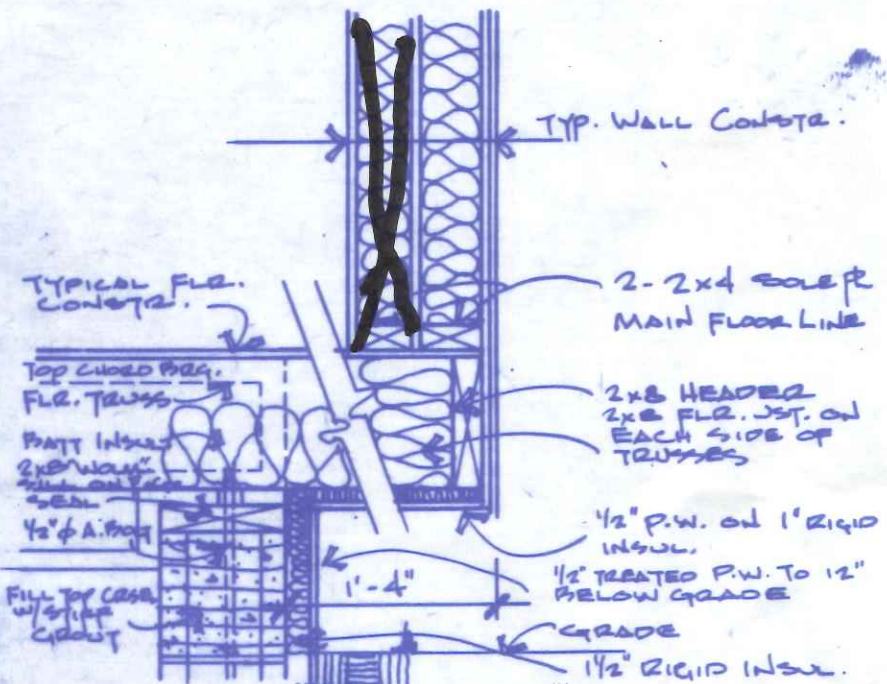
**9** CORNICE  
N.T.S.



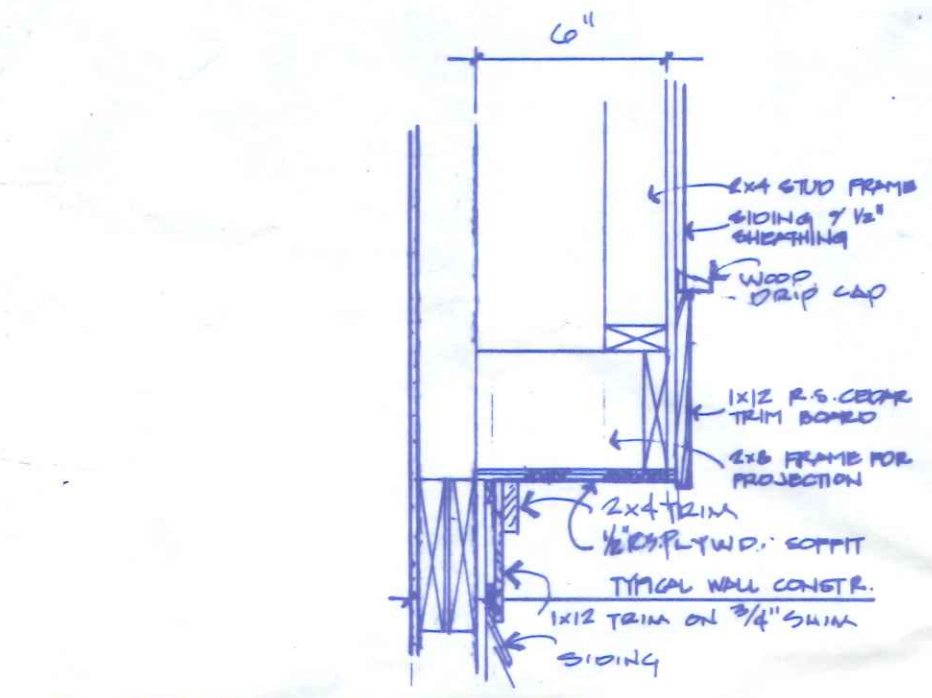
**5** CORNICE DETAIL  
N.T.S.



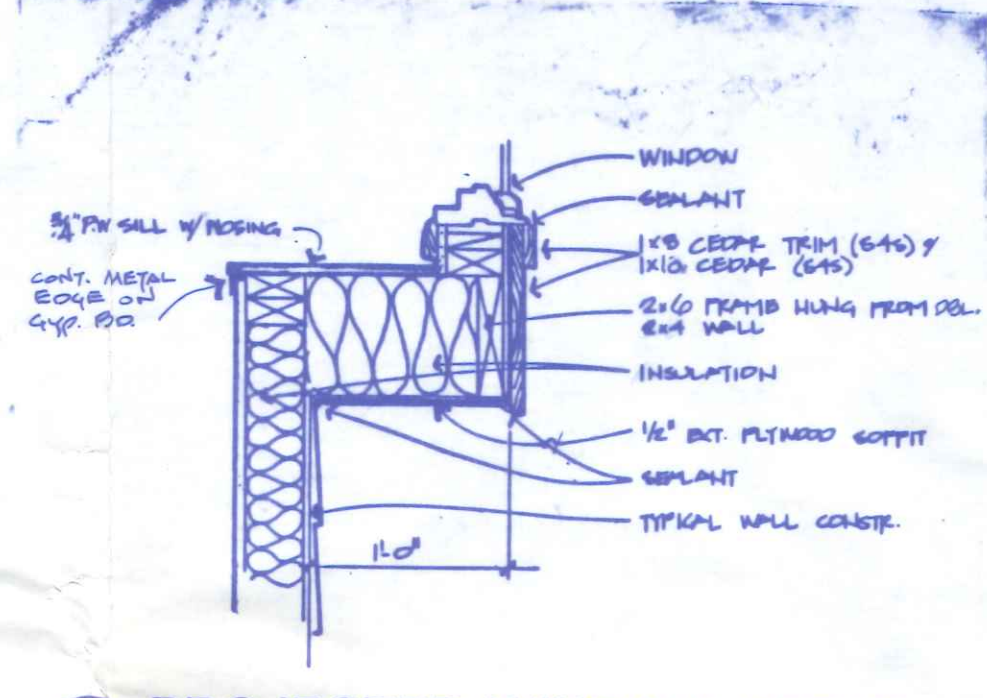
**1** CORNICE DETAIL  
N.T.S.



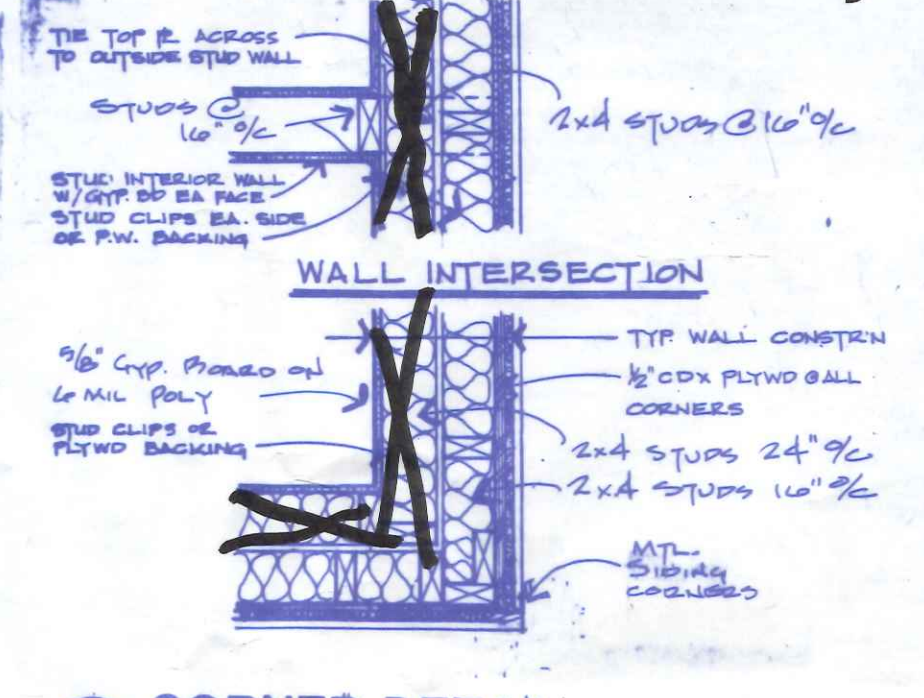
**14** SILL CANTILEVER  
N.T.S.



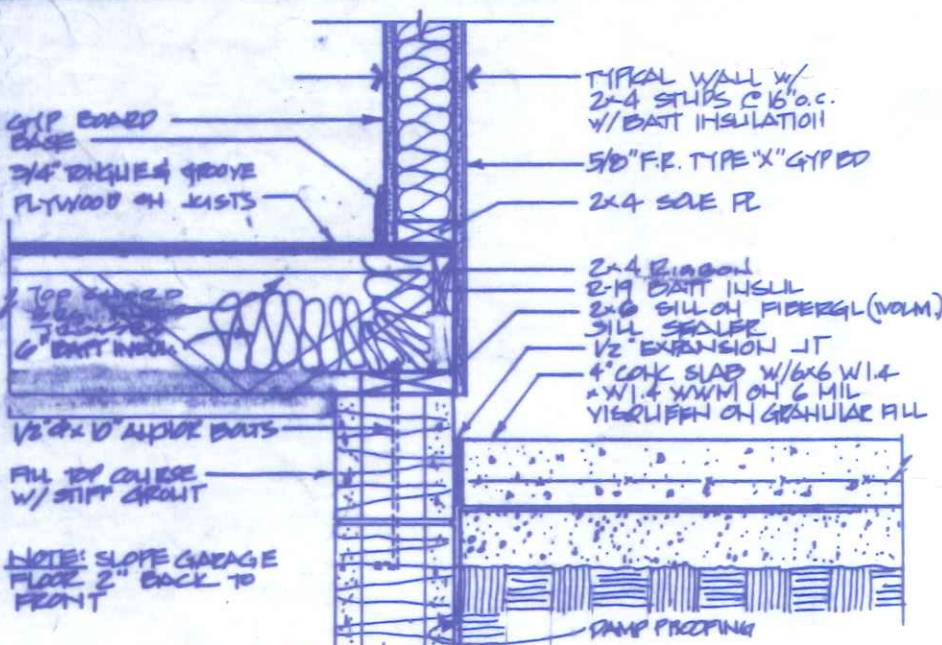
**10** WALL PROJECTION  
N.T.S.



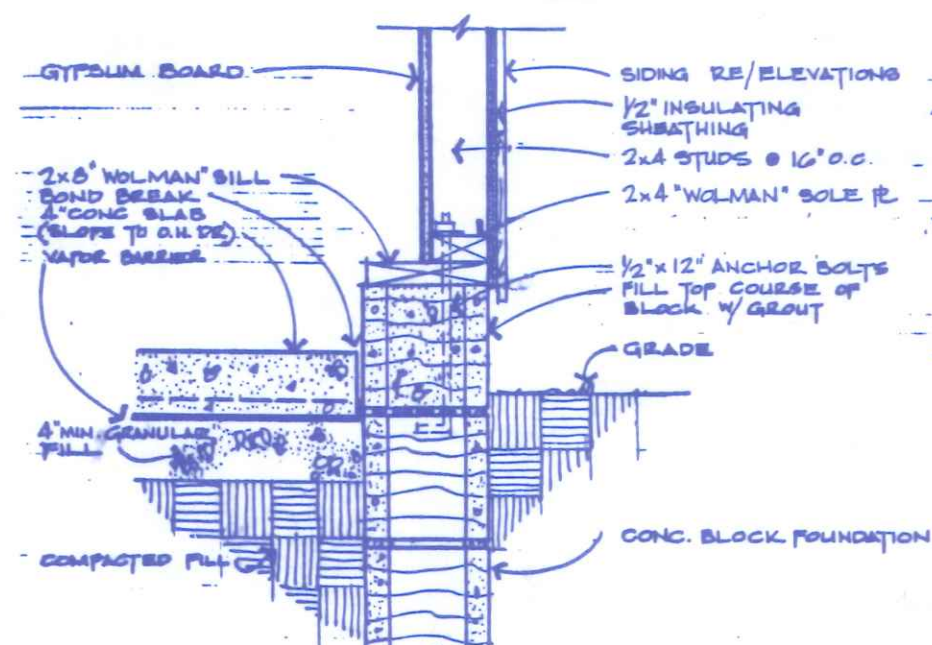
**6** PROJECTED WINDOW DETAIL  
N.T.S.



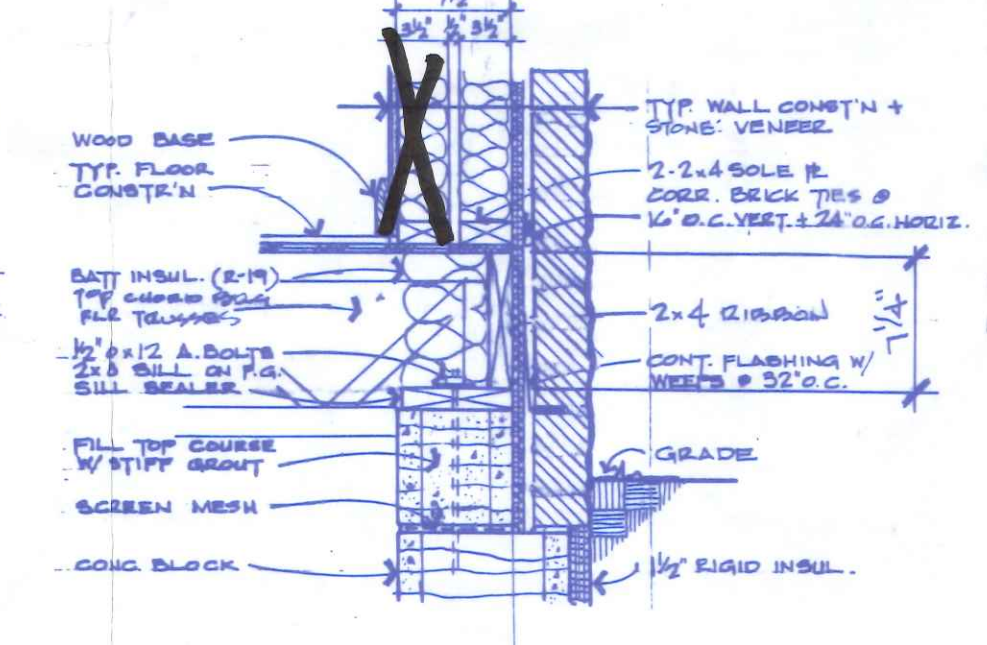
**2** CORNER DETAIL  
N.T.S.



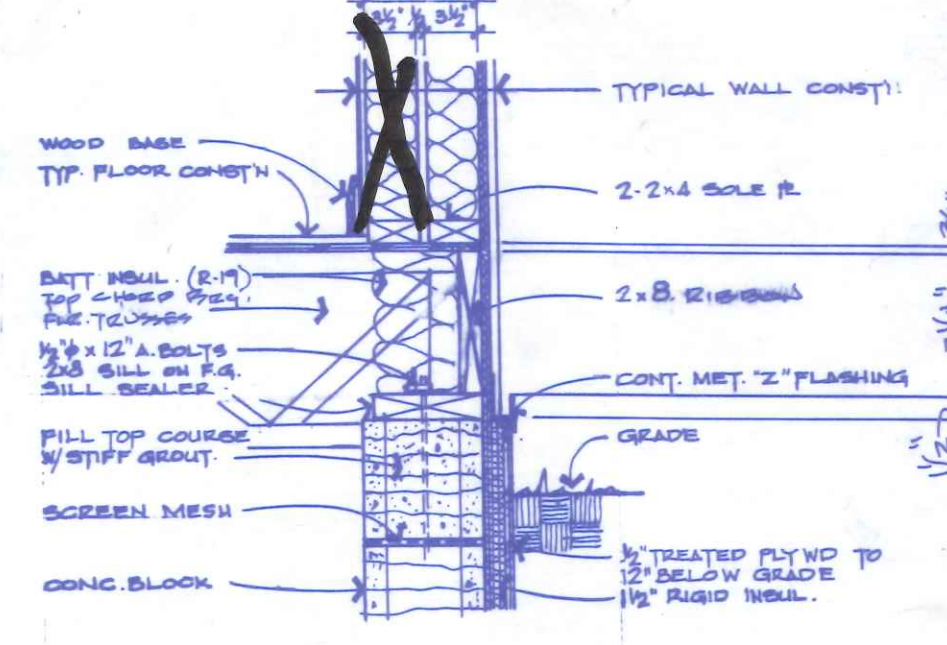
**15** SILL DETAIL (HOUSE/GARAGE)  
N.T.S.



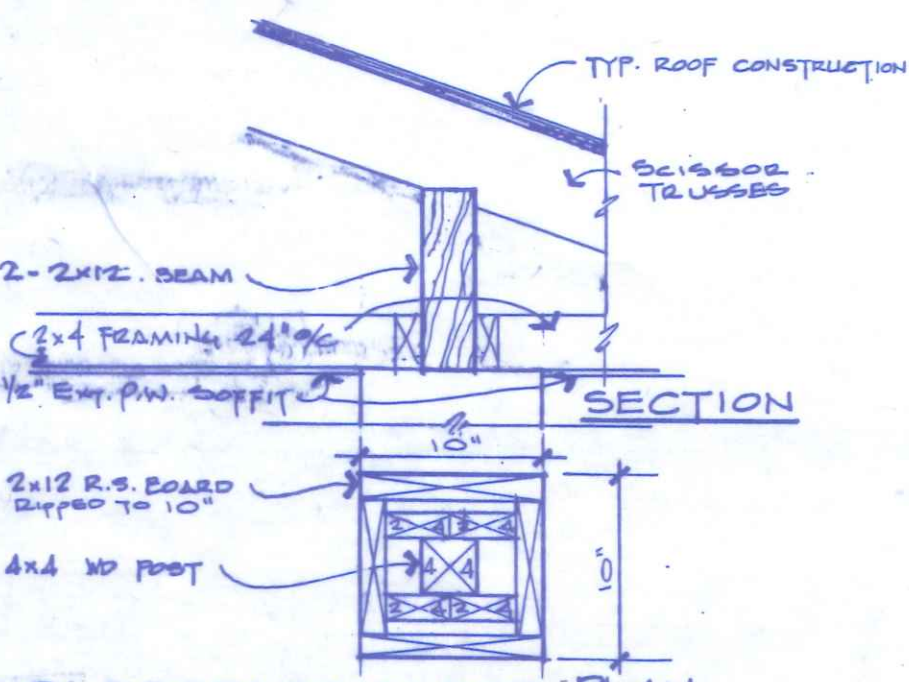
**11** SILL garage  
N.T.S.



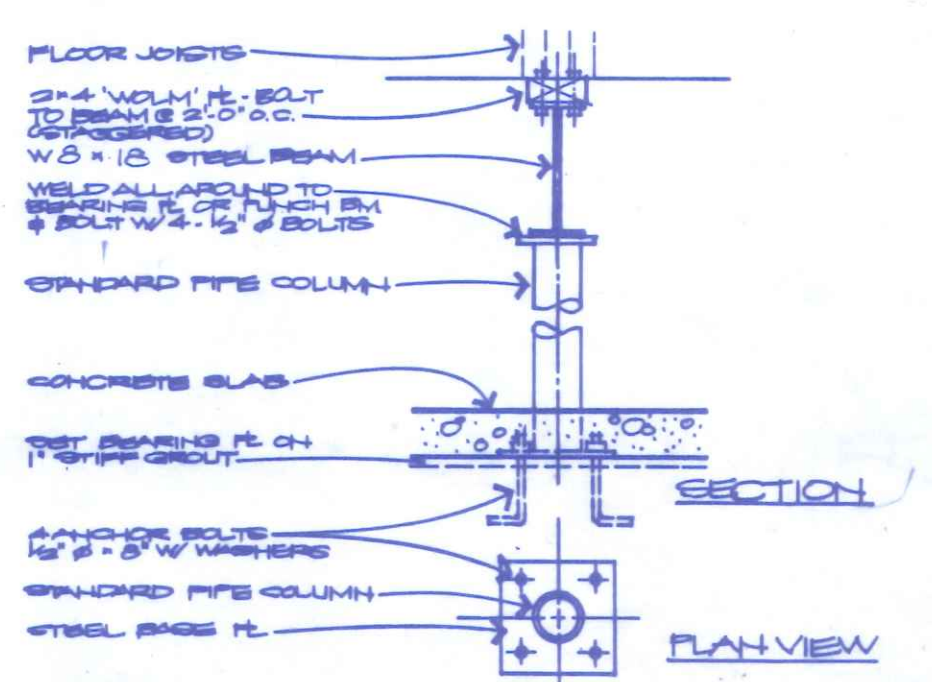
**7** SILL DETAIL  
N.T.S.



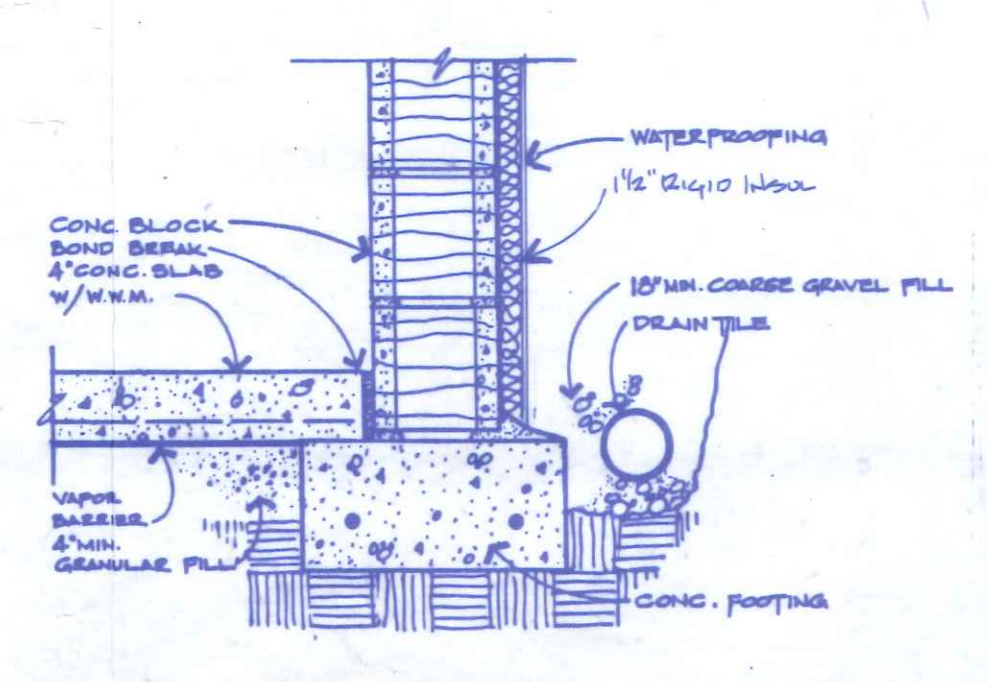
**3** SILL DETAIL  
N.T.S.



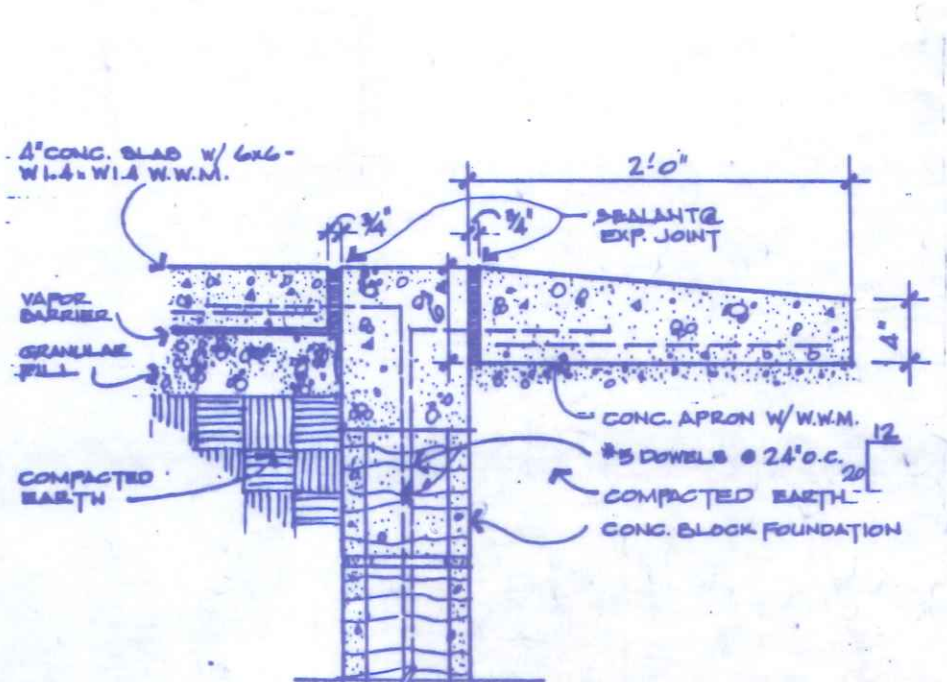
**16** POST & BEAM DET  
N.T.S.



**12** STEEL BEAM & COLUMN  
N.T.S.



**8** WALL DETAIL  
N.T.S.



**4** APRON DETAIL  
N.T.S.

JDB PLAN SERVICE  
THESE DRAWINGS AND SPECIFICATIONS ARE MADE AVAILABLE TO THE PURCHASER. THEY MAY BE ALSO USED AS DOCUMENTS FOR CONSTRUCTION. ALL NOTES AND LOCAL CODES ARE SUBJECT TO CHANGE ACCORDING TO CONDITIONS. ANY FORM OF REPRODUCTION OF THESE DRAWINGS WITHOUT THE WRITTEN PERMISSION OF JDB PLAN SERVICE IS PROHIBITED.

HOUSE DESIGN  
908

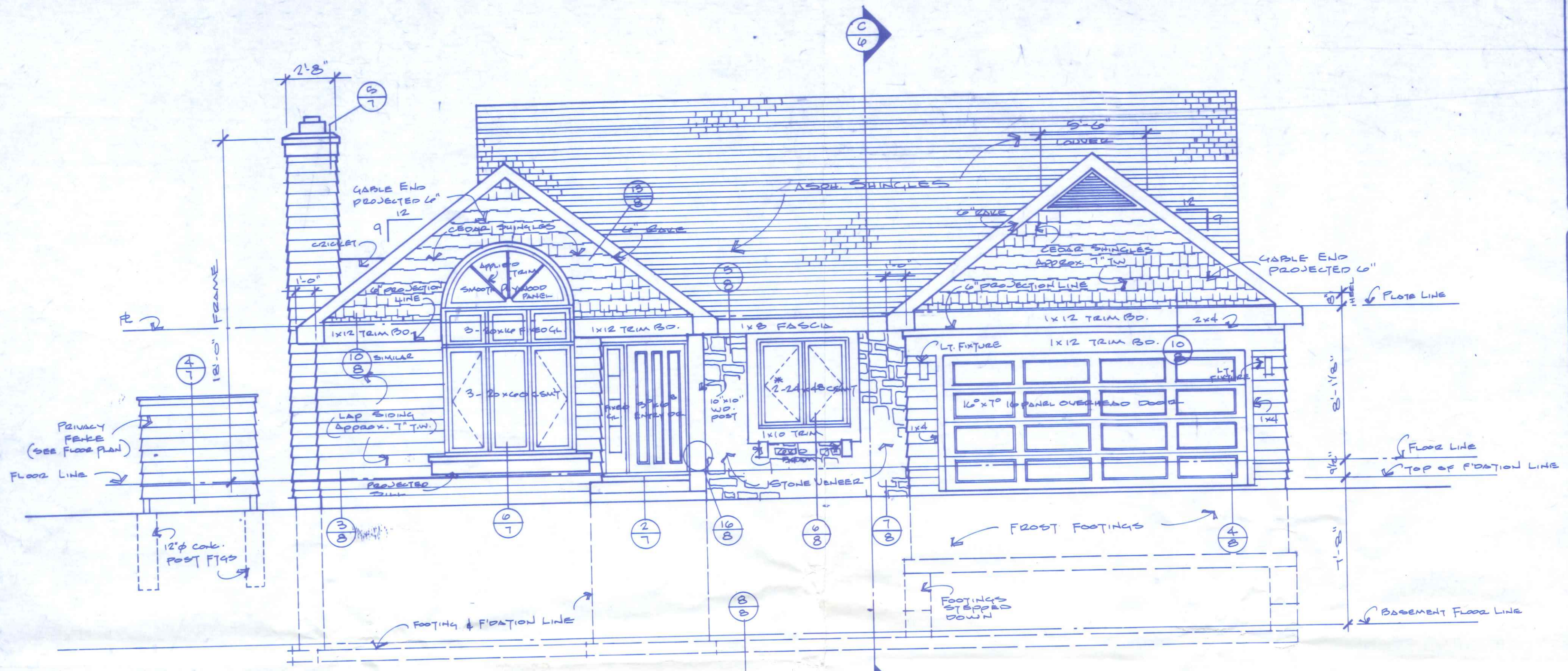
JDB

JDB PLAN SERVICE  
3001 GRAND AVENUE  
DES MOINES, IOWA 50312  
(515) 283-0404

SHEET  
8  
of 8  
DETAILS

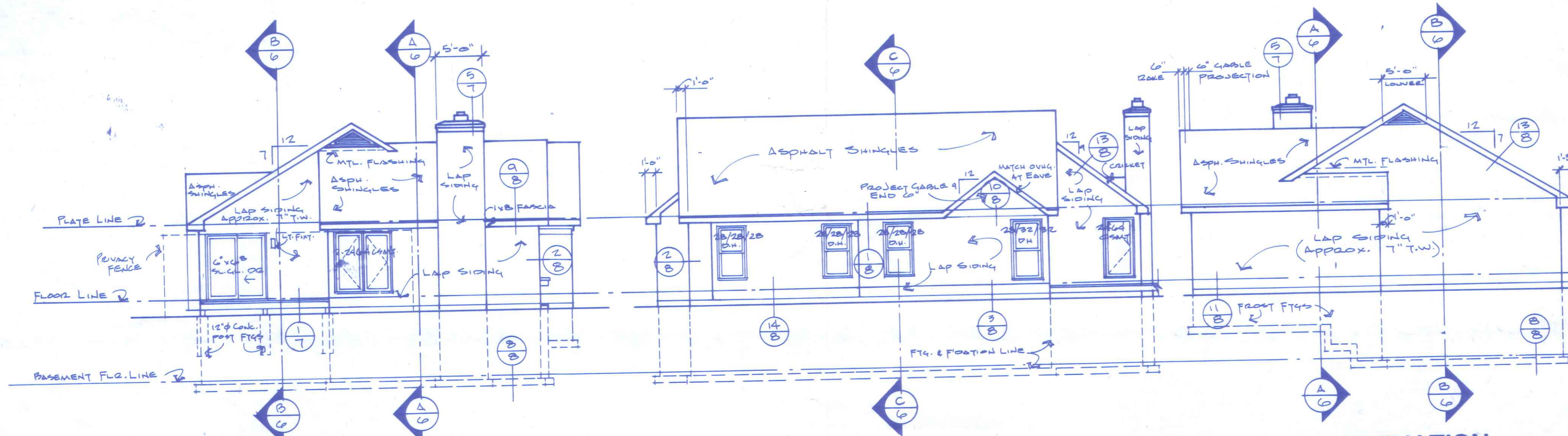
BRUNING 44-142-59237-1

**JDB PLAN SERVICE**  
 THESE DRAWINGS ARE PREPARED TO MAKE THE FULL DETAILS OF THE BUILDING AS SHOWN AS NEARLY AS POSSIBLE. THE CONTRACTOR SHALL BE RESPONSIBLE FOR VERIFYING ALL LOCAL CODES, BUILDING REGULATIONS, AND SITE CONDITIONS. ANY PART OF ANY DRAWING OR SPECIFICATION WHICH IS IN CONFLICT WITH ANY APPLICABLE LOCAL, STATE, FEDERAL, OR INTERNATIONAL CODES OR REGULATIONS SHALL BE DEEMED VOID AND THE CONTRACTOR SHALL BE RESPONSIBLE FOR OBTAINING ALL NECESSARY PERMITS AND APPROVALS.



**FRONT ELEVATION**  
 SCALE - 1/4" = 1'-0"

\* EMERGENCY EGRESS  
 One each of this group must be equipped with emergency egress hardware to comply with governing fire and building codes.



**LEFT ELEVATION**  
 SCALE - 1/8" = 1'-0"

**REAR ELEVATION**  
 SCALE - 1/8" = 1'-0"

**RIGHT ELEVATION**  
 SCALE - 1/8" = 1'-0"

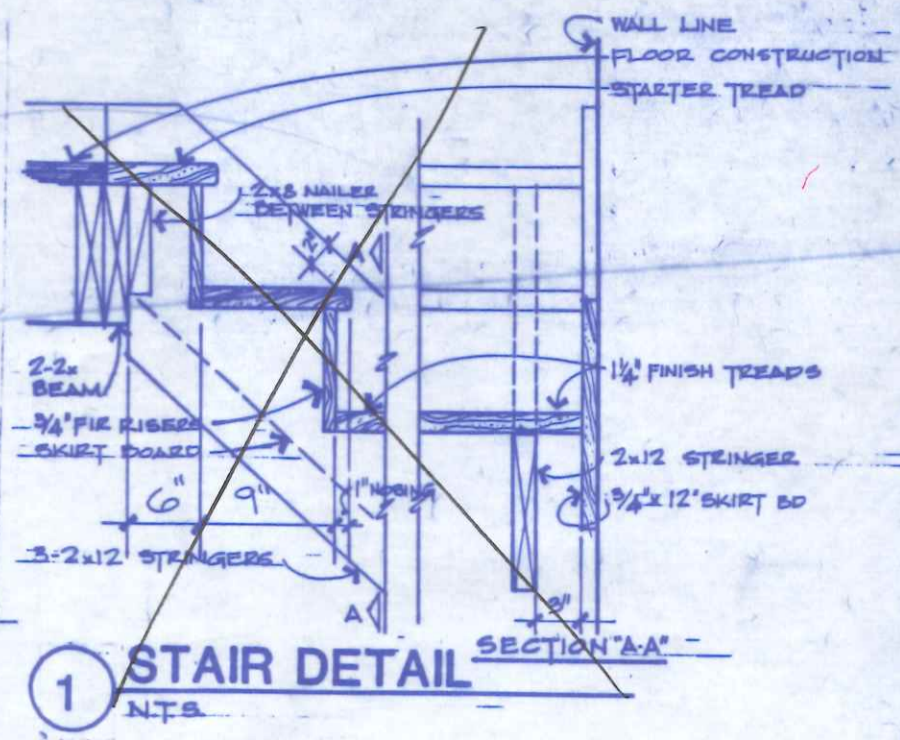
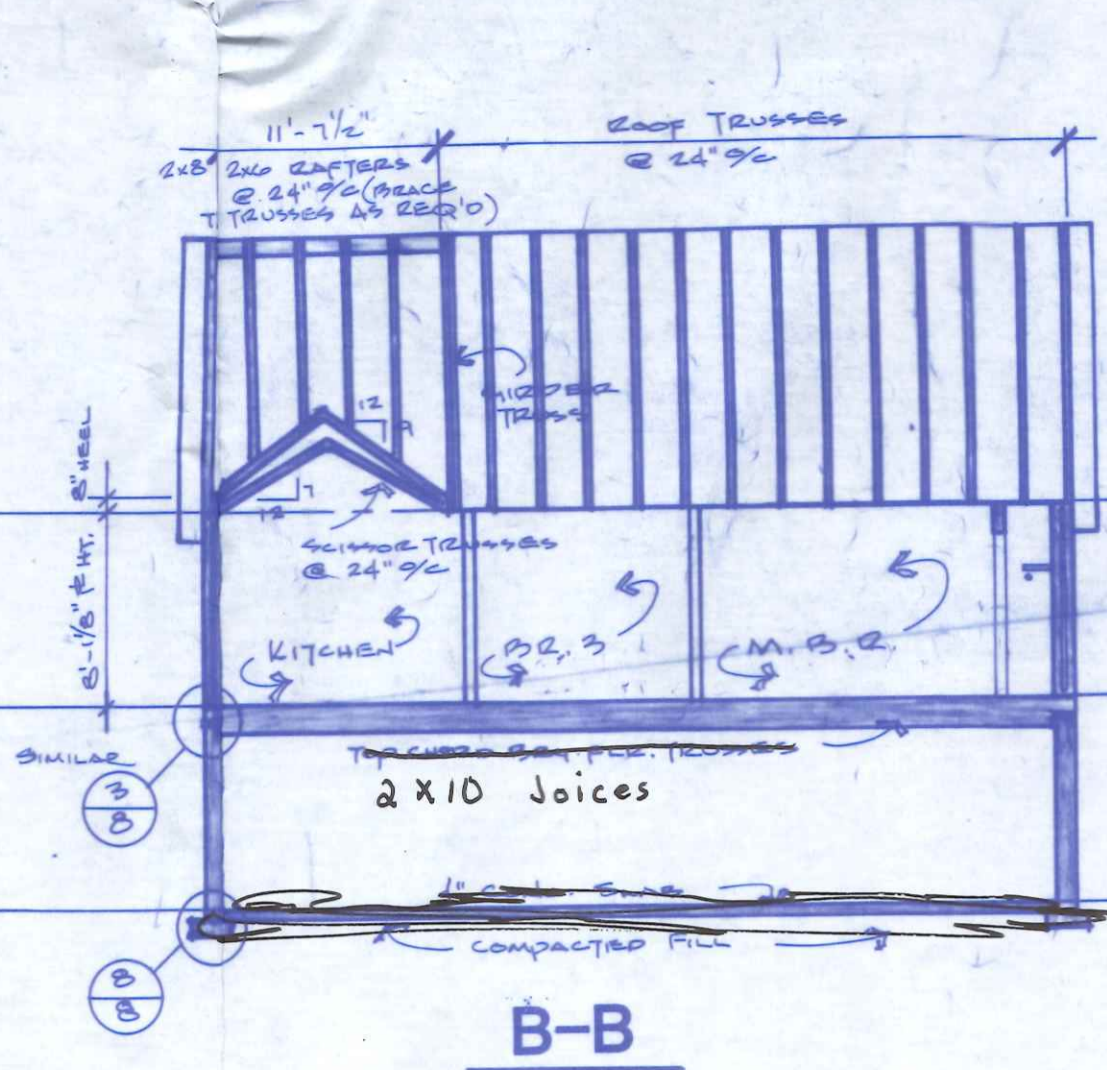
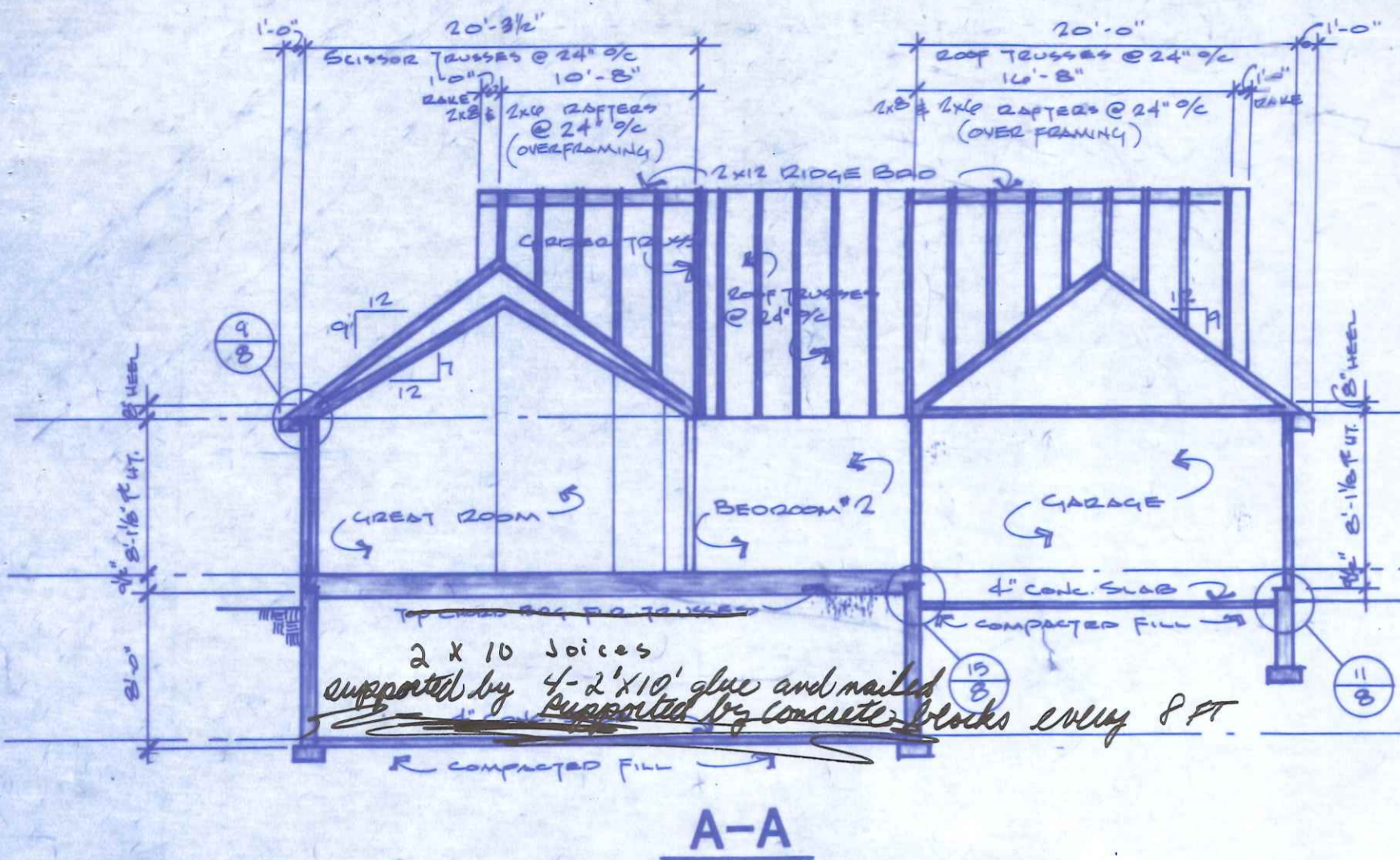
**HOUSE DESIGN**  
 908

**JDB**

JDB PLAN SERVICE  
 3001 GRAND AVENUE  
 DES MOINES, IOWA 50312  
 (515) 283-0404

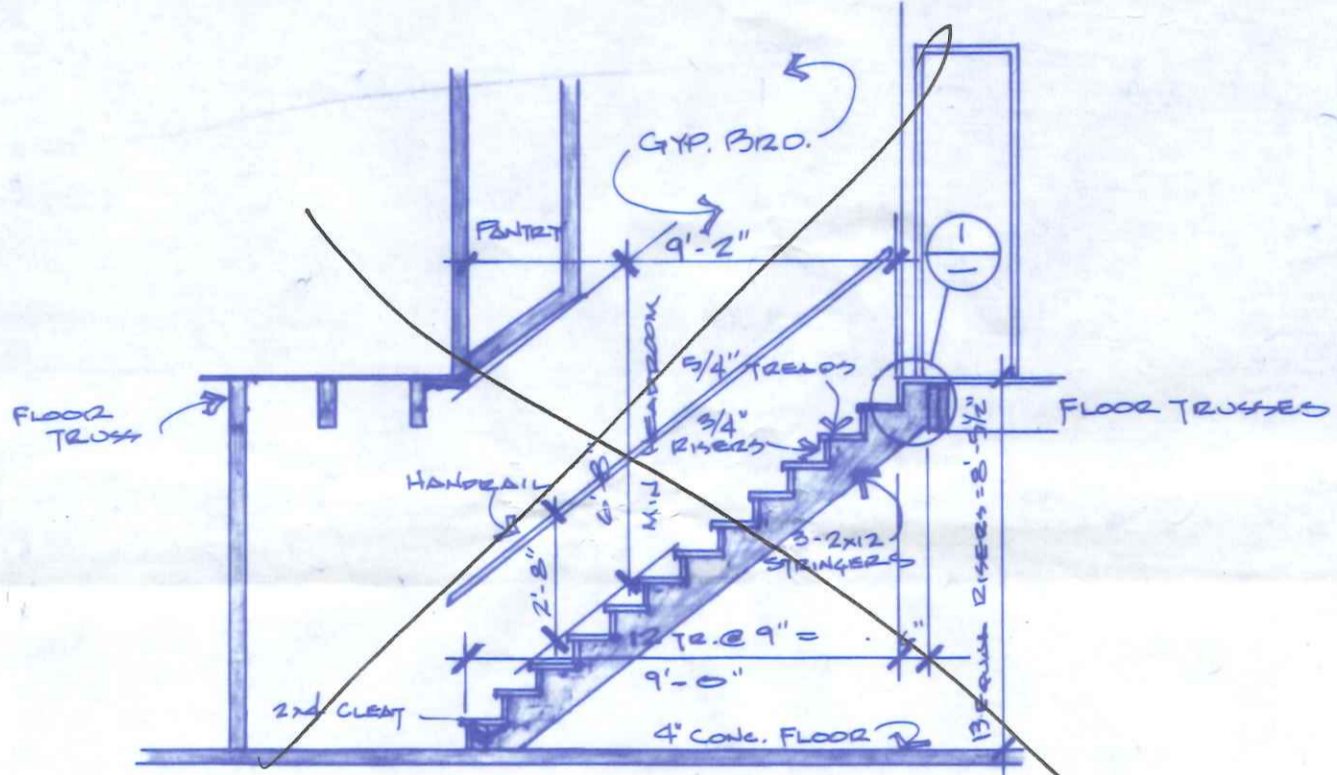
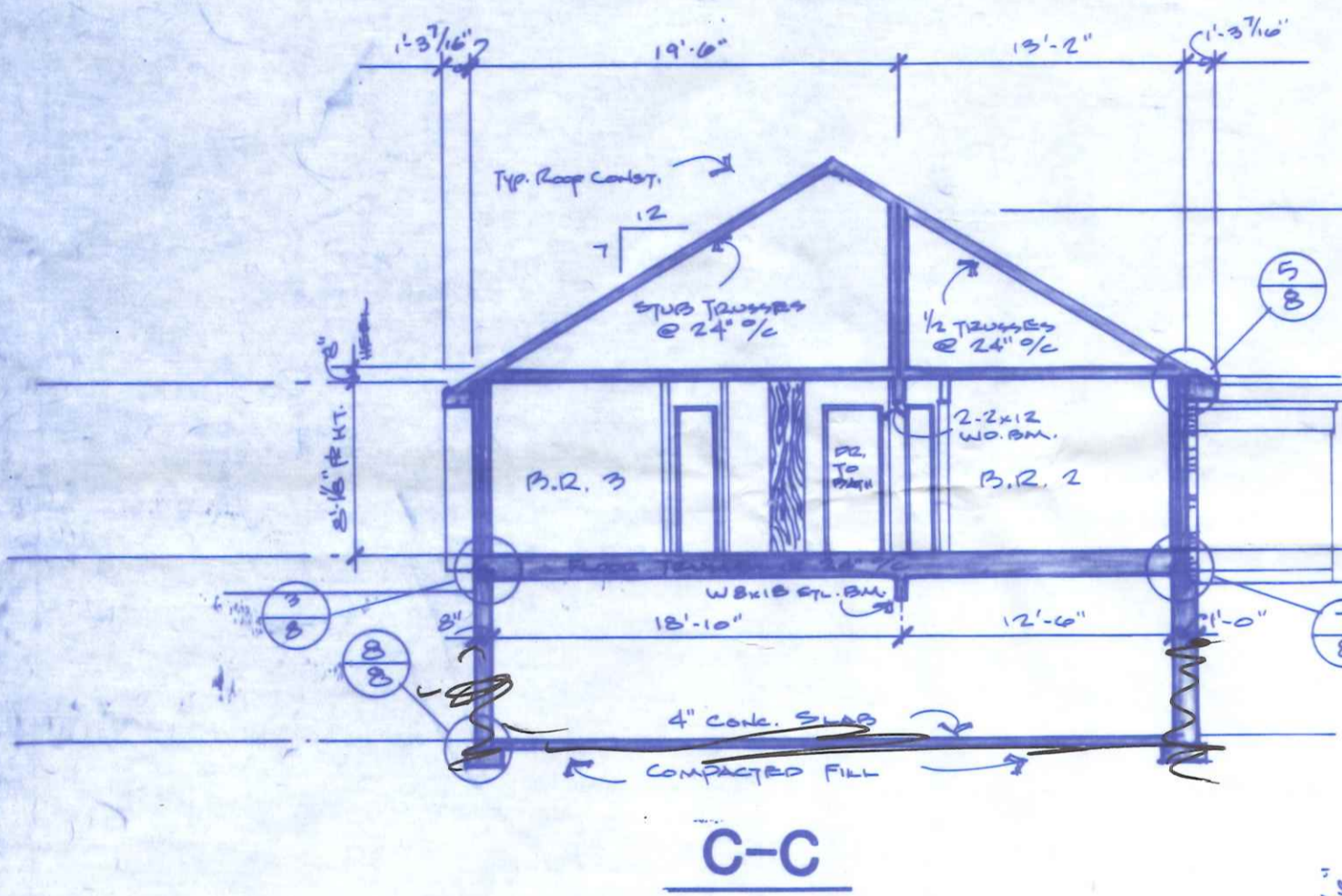
SHEET  
 5  
 OF 8

BRUNING 44-142 59237-1



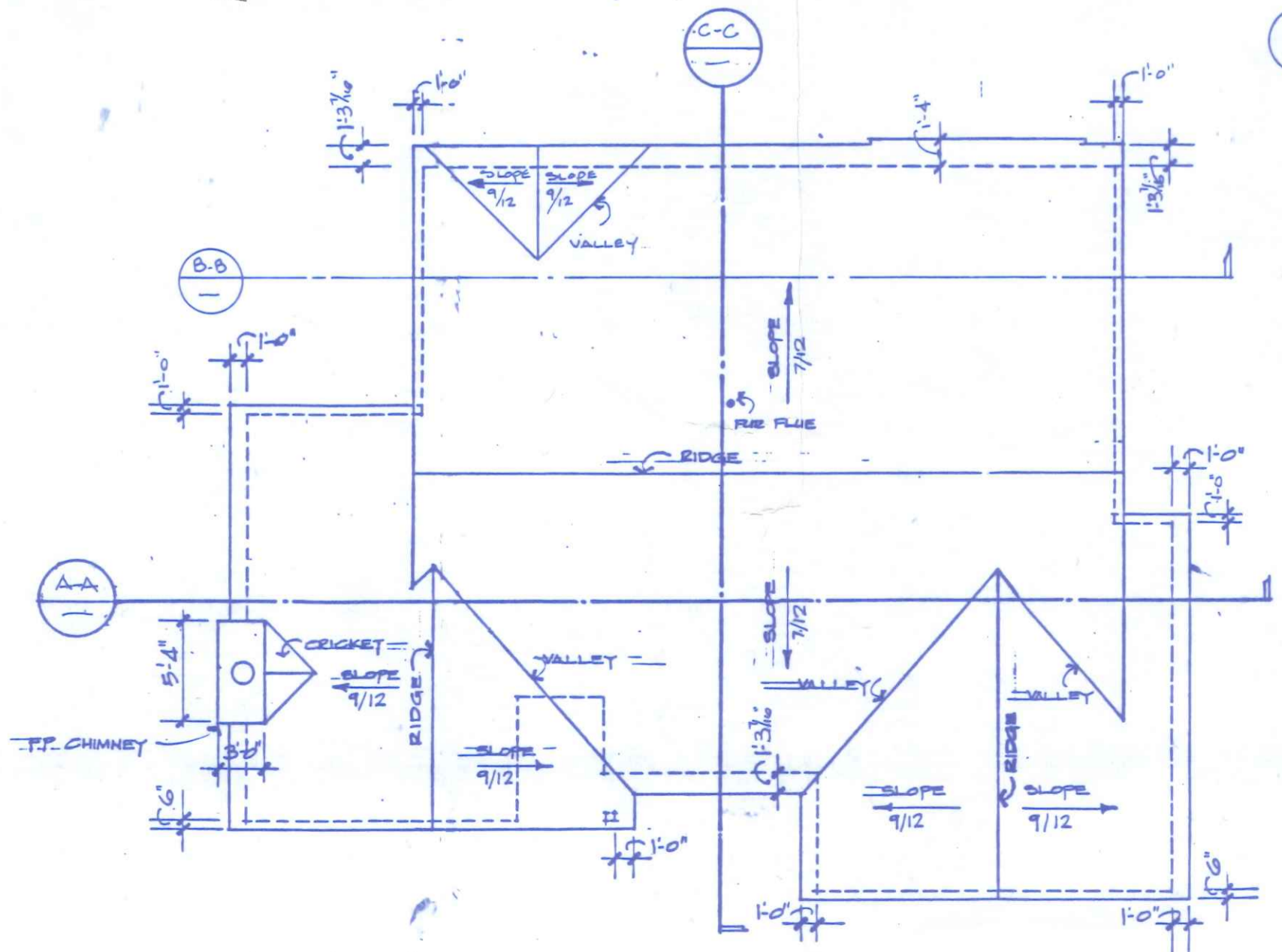
**BUILDING SECTIONS**

SCALE - 1/4" = 1'-0"



**STAIR SECTION**

SCALE - 1/4" = 1'-0"



**ROOF PLAN**

SCALE - 1/8" = 1'-0"

**TYPICAL ROOF**

Minimum 2200 asphalt shingles on 1/2" felt on 1/2" OSB plywood sheathing on roof framing.

**TYPICAL DOUBLE WALL**

Wood Lap or Shingle Siding on 1/2" insulation sheathing (R-3.5) on Double Wall. 2x4 studs @ 16" o.c. staggered with 1/2" space between. 2 layers R-13 Batt insulation between studs. 1/2" Brac inside wall to outside wall to areas where height exceeds 10 feet. INTERUM - 1/2" gypsum board on 0 wall vapor barrier.

**TYPICAL FLOOR**

Finish Floor on 3/8" underlayment on Building Paper on 3/4" 1/2 OSB plywood subfloor on Floor Framing.

**JOB PLAN SERVICE**  
 THESE WORKING DRAWINGS ARE PROVIDED TO MAKE THE FULL DETAILS OF THE PROJECT AVAILABLE TO ALL CONTRACTORS FOR CONSTRUCTION. ALL NOTES AND DIMENSIONS ARE SUBJECT TO CHANGE ACCORDING TO LOCAL CODES. BUILDERS MUST VERIFY THE ACCURACY OF THESE DRAWINGS BEFORE CONSTRUCTION OF THE PROJECT.

**HOUSE DESIGN**  
 908

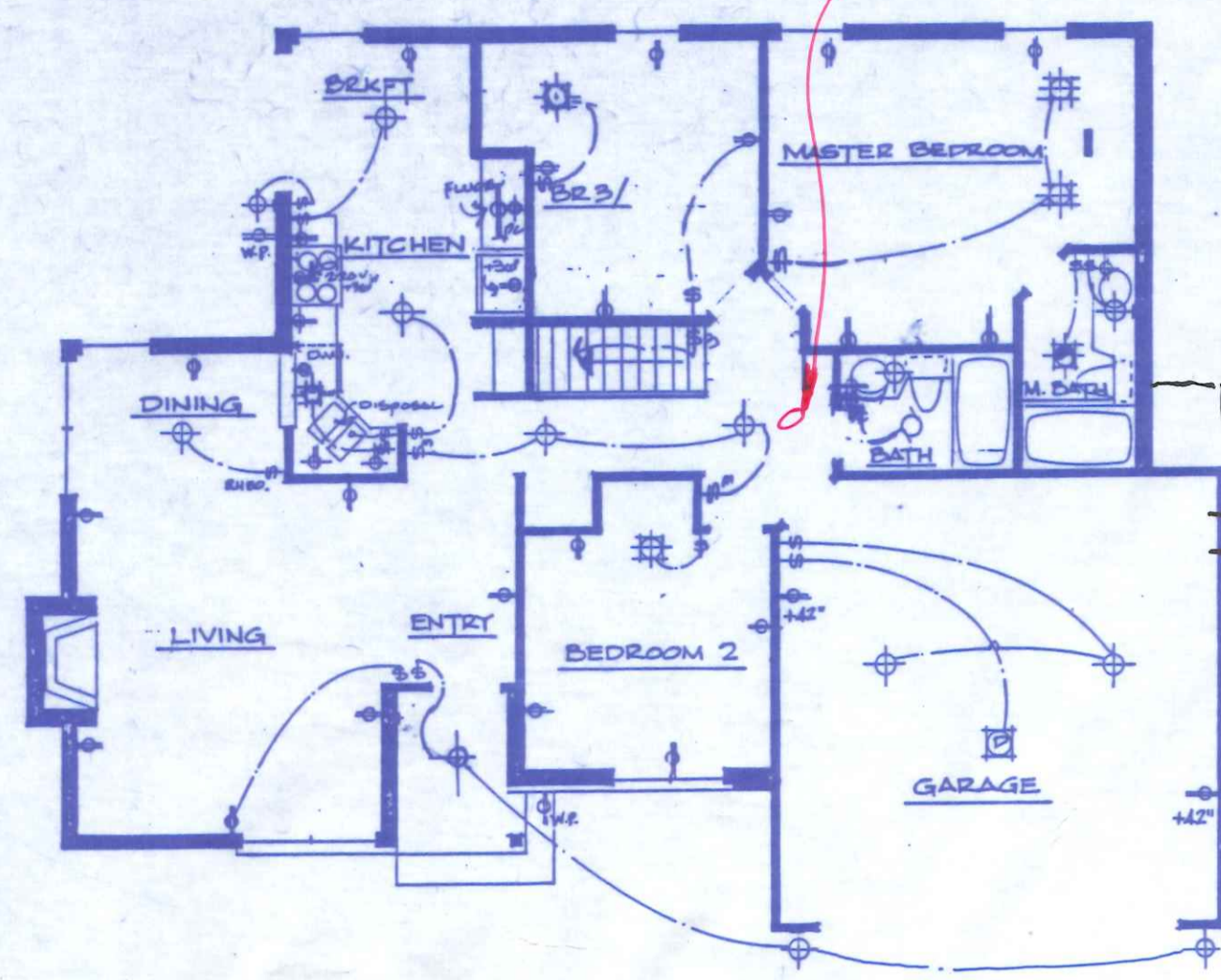
**JDB**

**JDB PLAN SERVICE**

3001 GRAND AVENUE  
 DES MOINES, IOWA 50312  
 (515) 283-0404

**SHEET**  
 6  
 OF 8

BLDG. SECTIONS, ROOF PLAN, STAIR SECTION  
 BRUNING 44-142 59237-1



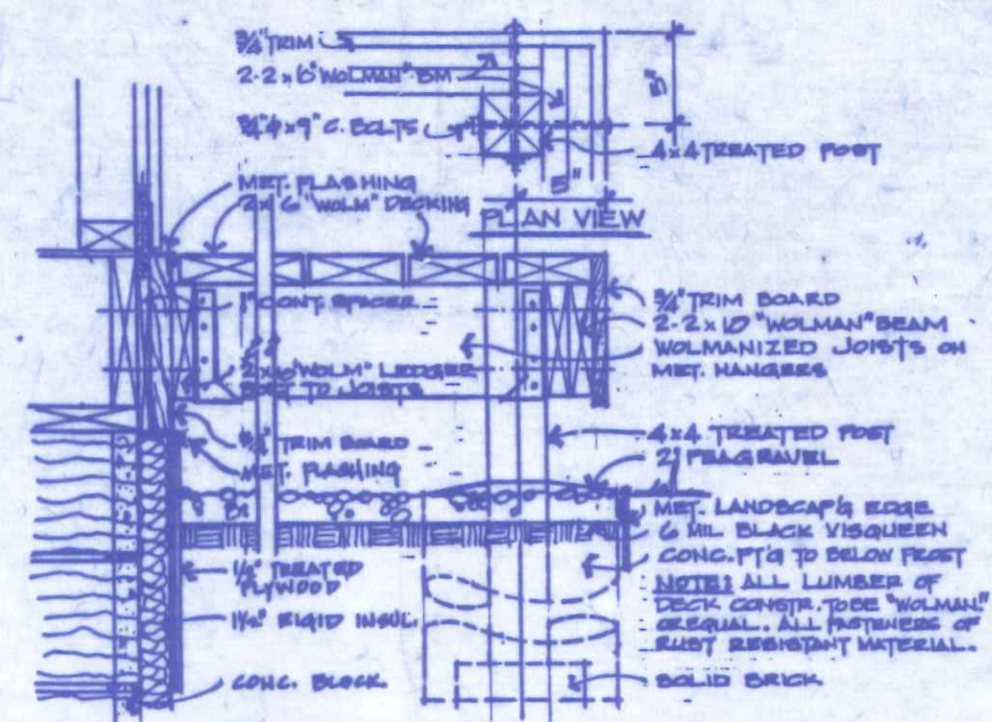
**ELECTRICAL PLAN**

N.T.S.

**ELEC. KEY**

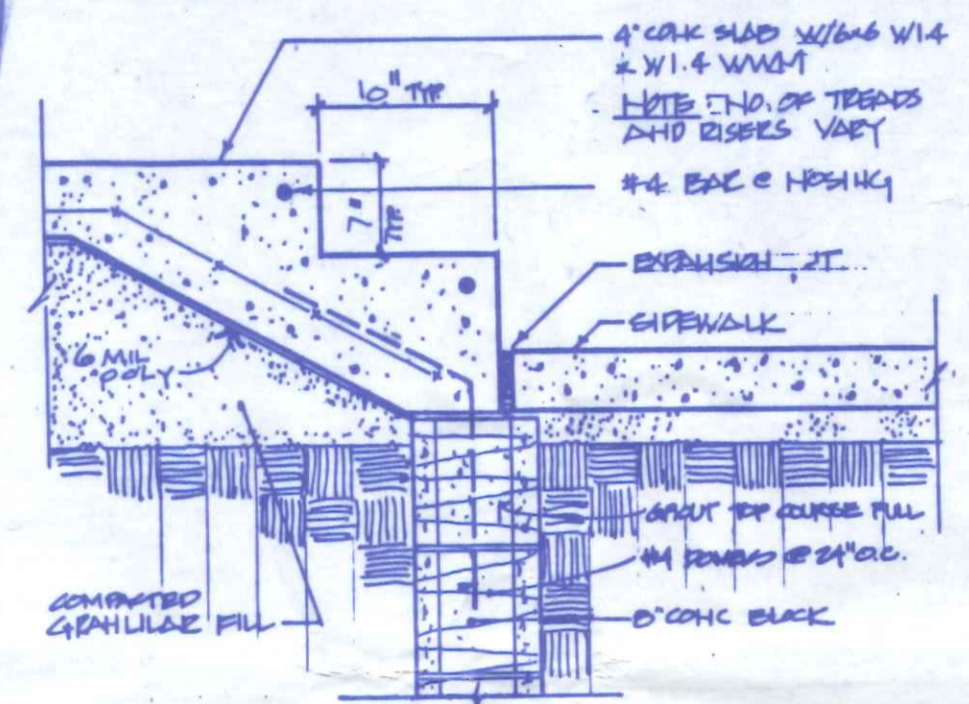
- Duplex Convenience Outlet
- Duplex Outlet Above Counter
- Weatherproof Duplex Outlet
- Half-switched Duplex Outlet
- Special Purpose Outlet
- Duplex Outlet in Floor
- 220 Volt Outlet
- Electric Door Operator
- Wall Switch
- Three-way Switch
- Four-way Switch
- Ceiling Mounted Incandescent Light Fixture
- Wall Mounted Incandescent Light Fixture
- Recessed Incandescent Light Fixture
- Exhaust Fan
- Exhaust Fan/Light Combination
- Fluorescent Light Fixture

**NOTE**  
 • Provide and install locally certified SMOKE DETECTORS as required by National Fire Protection Association (N.F.P.A.) or as required by governing local codes.  
 • Provide and install ground fault circuit interrupters (G.F.I.'s) per National Electric Code or as required by governing local codes.



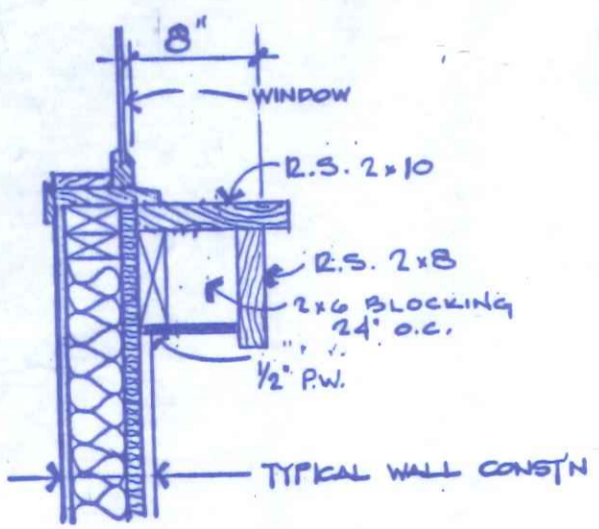
**1 DECK DETAIL**

N.T.S.



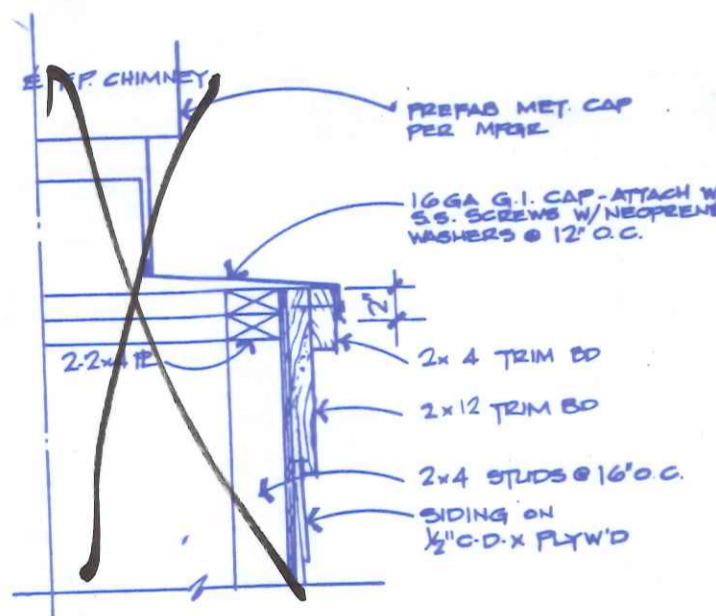
**2 STOOP DETAIL**

N.T.S.



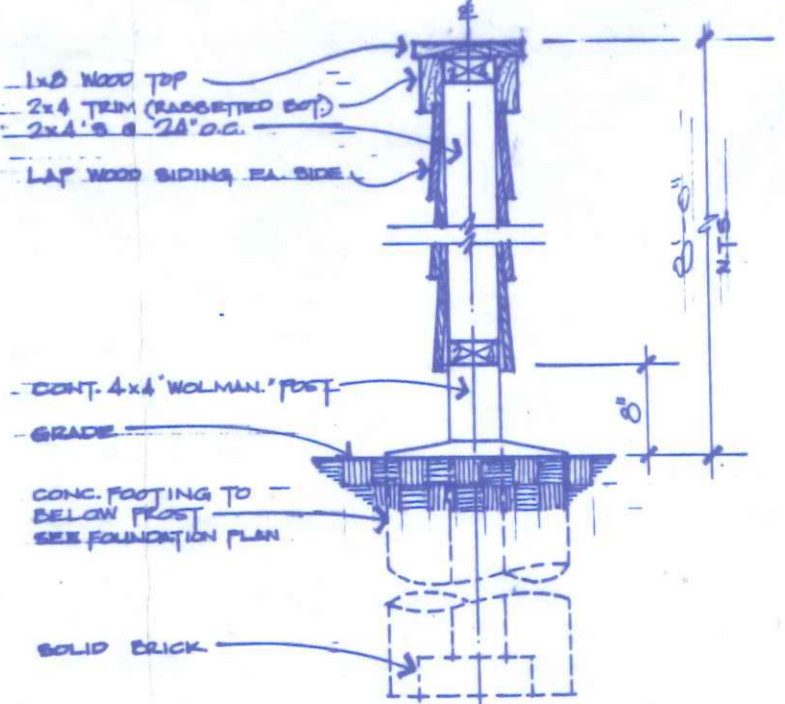
**6 PROJECTED SILL**

N.T.S.



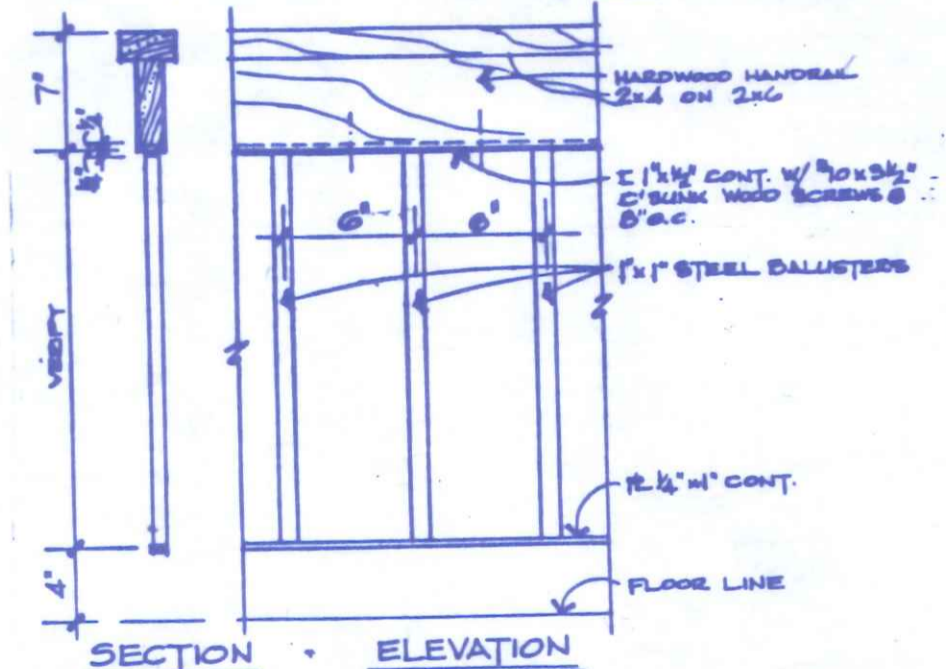
**5 CHIMNEY CAP**

N.T.S.



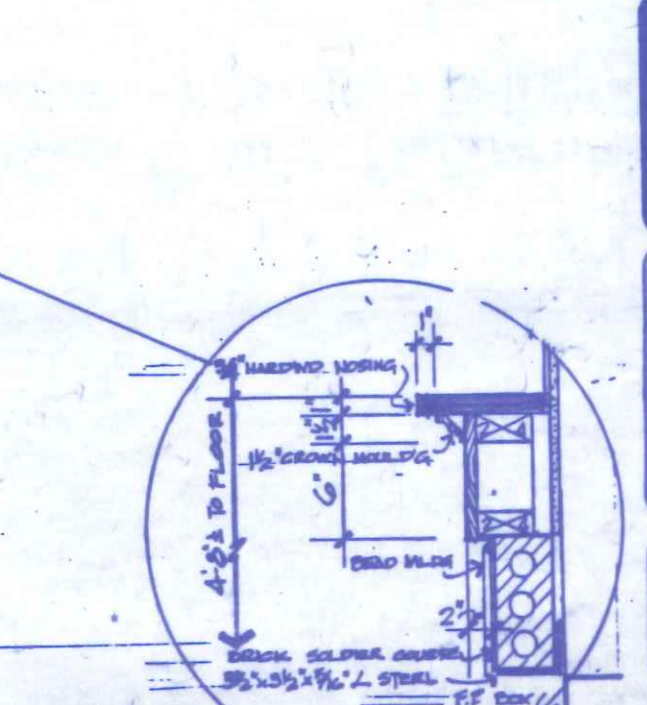
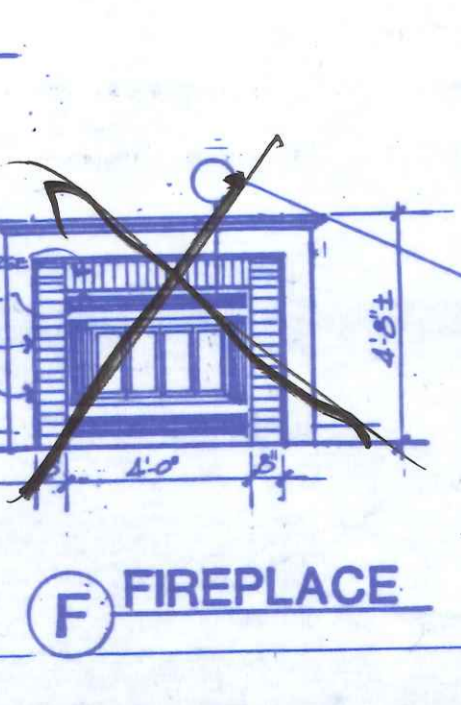
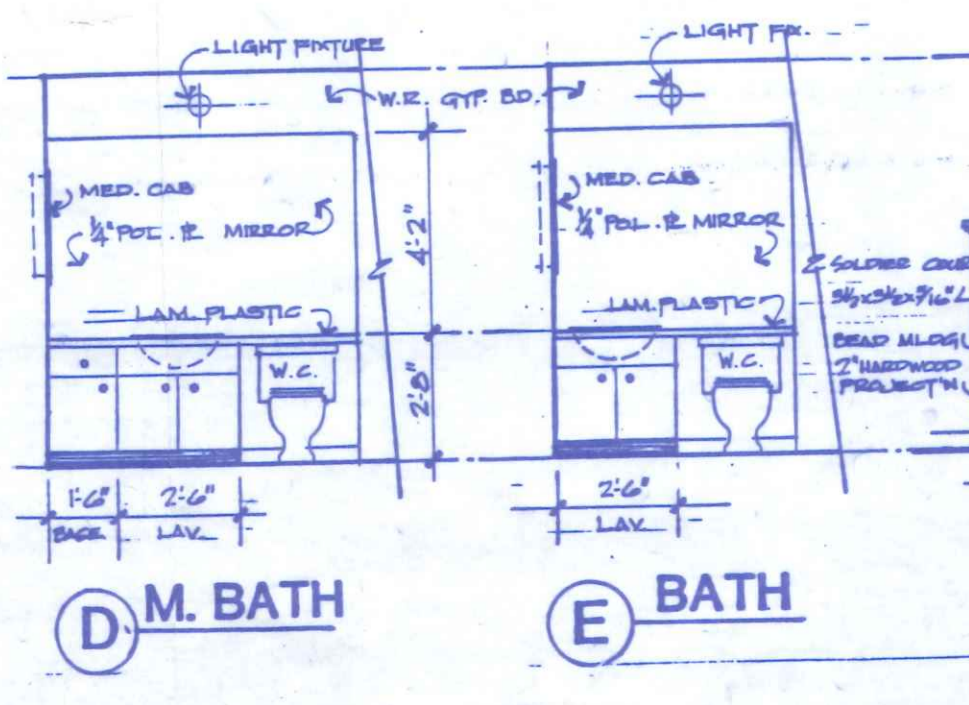
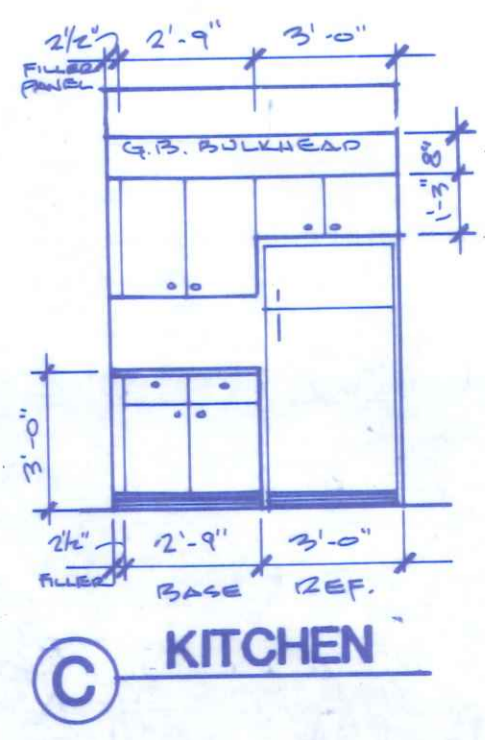
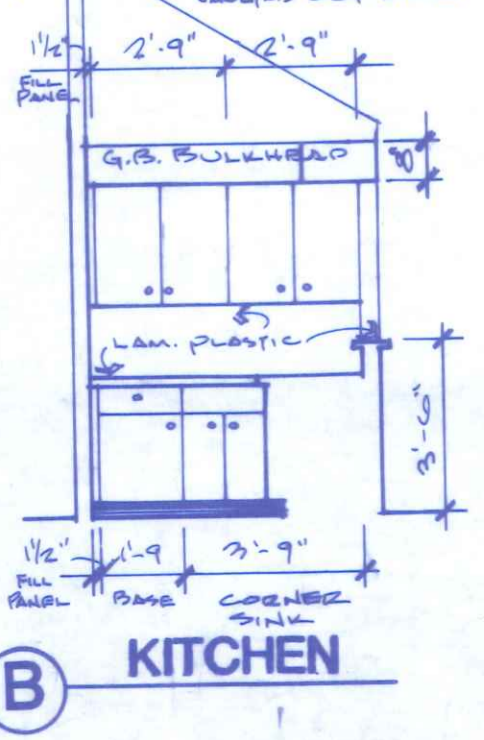
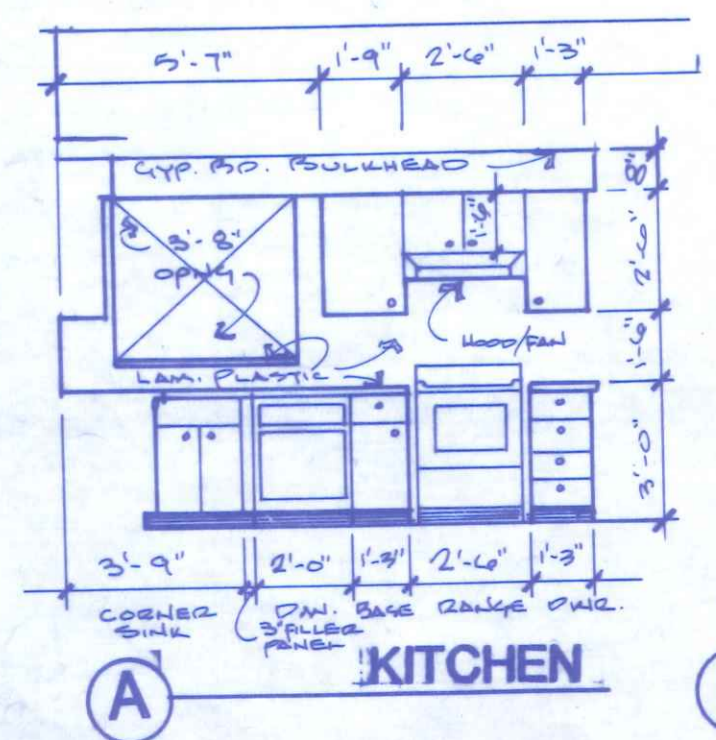
**4 FENCE DETAIL**

N.T.S.



**3 HANDRAIL DETAIL**

N.T.S.



**HOUSE DESIGN**

**JDB**

JDB PLAN SERVICE  
 3001 GRAND AVENUE  
 DES MOINES, IOWA 50312  
 (515) 283-0404

SHEET 7 OF 8

BRUNING 44-142 59237-1